

Swing Groover

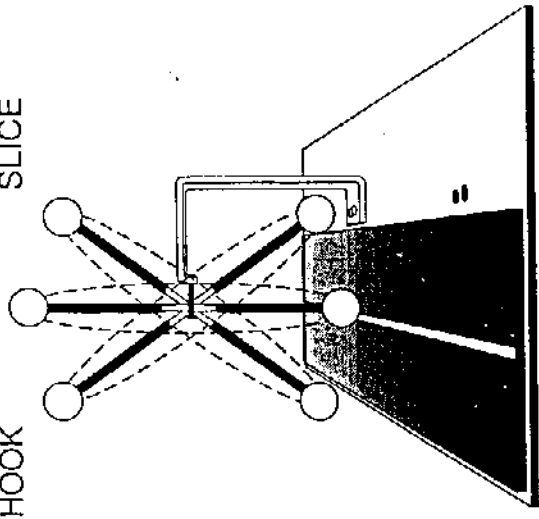
IMPROVE YOUR GAME

IT'S NO SECRET... that the only way to improve your game is practice. NOW you can practice at home... indoors or out ... with the Golfer's Secret Weapon -- the Swing Groover™. The platform base allows you to practice indoors or out... in the family room, garage, basement, on the rooftop, backyard, anywhere you can safely swing a golf club!

SHOWS HOW WELL YOU HIT THE BALL

The Swing Groover™ gives you the benefit of knowing how well you are hitting the ball. When you hit the ball, a straight spin indicates a straight hit. A hook or slice will be indicated by off center spins as shown in the illustration.

HOOK STRAIGHT SLICE



We are not telling you to forget the driving range or to stop getting advice from your local PGA pro. But with The Swing Groover™ you'll be able to get in extra practice at home - which will give you that competitive edge on the course when it really counts. So get your game in the groove and keep it there... with The Swing Groover™, *The Golfer's Secret Weapon!*

IMPORTANT PRECAUTIONS

- Ⓜ ALWAYS USE THE SAME PRECAUTIONS YOU WOULD WHEN PLAYING GOLF.
- Ⓜ NEVER ALLOW ANYONE TO STAND DIRECTLY IN FRONT OF OR BEHIND THE BALL.
- Ⓜ ALLOW CHILDREN TO USE ONLY UNDER ADULT SUPERVISION.
- Ⓜ BE CAREFUL TO HIT ONLY THE BALL. TOPPING THE BALL, CHOPPING DOWN ON THE BALL OR HITTING THE CORD OR THE BASE UNIT WILL CAUSE DAMAGE TO BOTH YOUR CLUB AND THE SWING GROOVER. USE AN OLD CLUB AND SWING EASY UNTIL YOU ARE CONFIDENT OF YOUR ABILITY TO HIT ONLY THE BALL WHEN YOU SWING.
- Ⓜ IF YOU MIS-HIT AND SEVERELY TOP THE BALL OR HIT THE CORD, UPRIGHT ARM OR BASE UNIT STOP! CHECK YOUR CLUB HEAD AND SHAFT FOR DAMAGE. IF ANY DAMAGE IS EVIDENT DISCONTINUE USING THAT CLUB. THE HEAD COULD COME OFF AND INJURE YOU OR A BYSTANDER.

DENNCO, INC. ASSUMES NO LIABILITY FOR MISUSE OF THE SWING GROOVER.™

Model 222 SWING GROOVER™ REPLACEMENT PARTS

Qty.	Description	Price
—	BALL UNIT-Style 222consists of ball, leather cord, and loop assembly.....	\$5.95
—	Replacement Grass Strips (2 pcs).....	\$3.95
—	Replacement White Strip.....	\$4.95
—	Spacer, bolts, allen wrench set.....	\$4.95
—	Add postage and handling.....	\$2.00

TOTAL ENCLOSED(Check or M.O.\$_____)
 Master Card or Visa accepted- Call 1-800-336-6264 OR
 SEND CHECK OR MONEY ORDER WITH YOUR NAME AND ADDRESS

- WARRANTY-

Dennco, Inc. guarantees this product for one year against defects caused by faulty materials or workmanship. Please return the parts directly to us, freight prepaid, for free repair or replacement, at our option. This guarantee does not cover damage by misuse or normal wear. In the event you have any questions please contact us at the address below or call us.

THE SWING GROOVER™ is proudly made in the U.S.A. by :

DENNCO, INC.

21 Northwestern Dr.
 Salem, NH 03079
 Toll Free: 1-800-336-6264
 NH: (603)-898-0005

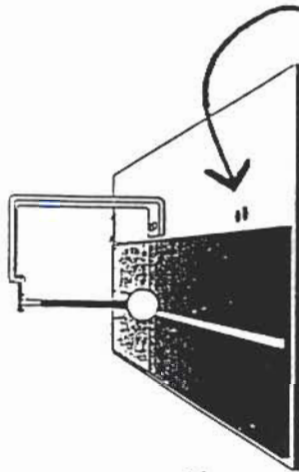
Before you begin...

Please read and follow these instructions carefully before using your Swing Groover™. Failure to follow the instructions may result in damage to your Swing Groover™, to your golf club, or possibly cause injury to you or a bystander.

Assembly

Tools needed: Allen Wrench, included.

As shown in the illustration, The Swing Groover™ is easy to assemble. Fit the upright arm over the holes as shown for left or right handed golfer. The illustration shows how the Swing Groover™ should appear for a right handed golfer.



THIS SWING GROOVER IS SET UP FOR A RIGHT HANDED GOLFER

USE THESE TWO HOLES FOR LEFT HANDED GOLFER

Assembly Notes...

Both plastic spacers must always be used or the bolts will protrude through the bottom of the base plate, causing damage to your floor.

Using the two socket head screws, two washers, and two plastic Spacers, and Allen wrench provided, fasten the upright arm to the base plate as shown in the exploded view at right:

After several drives, check and retighten the two socket head screws.

Should you mis-hit and tear the grass surface it can be glued back into place to prevent further tearing. "Hot melt" glue works best. Follow glue instructions. Replacement grass strips are available using the ordering form on the back page.

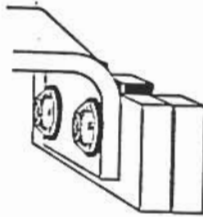
About the Ball Height...adjust your grip

Because the grass surface is about 1" above floor level, we recommend gripping your club about 1" shorter than usual (1" closer to the clubhead) when using the Swing Groover. During actual play, use your regular grip.

Adjusting Ball Height...

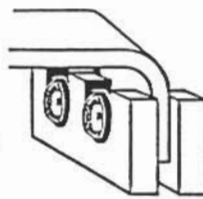
Driver Tee Height

For the driver you may set either one or two spacers under the steel arm. Possible spacer configurations are shown in illustrations below. ALWAYS PLACE THE METAL WASHER RIGHT UNDER THE HEAD OF THE SCREW.



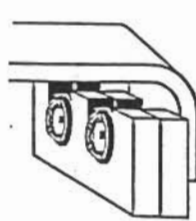
Teed-up High

Both spacers below steel arm



Teed-up Low

One spacer above arm one spacer below arm



Fairway Lie

Both spacers above arm.

Irons & Fairway Woods

For irons or fairway woods, the ball usually rests on or slightly above the grass. This can be accomplished by setting both spacers above the steel arm as shown in illustration at right:

LOCATION

Find a flat area to set up the Swing Groover™. The area should allow enough room to swing the club freely.

NEVER FACE THE SWING GROOVER IN A DIRECTION WHERE THE BALL COULD INJURE SOMEBODY IF IT SHOULD COME OFF OF THE CORD.

Before taking a full swing, practice with easy chips and half swings to be sure you are able to hit only the ball, without topping the ball, hitting the tether cord, base or steel arm.

Would you leave your clubs out in the rain?

When finished with the Swing Groover™, store the entire assembly indoors to prevent weather damage. Our warranty does not cover water damage.